



## ADJUSTED FIT

- Fine 100% cotton poplin with **Easy Care** finish
- Soft feminine collar
- Cross stitched mother-of-pearl effect buttons
- 2-button cuffs
  - a. Straight cuffs & thin square-shaped gauntlets
  - b. French cuff option
- Darts at bustline & back panel for a feminine shape
- Horizontal last buttonhole
- Curved bottom hem



- 100% combed cotton
- Poplin
- 120 g/m<sup>2</sup> (white) - 125 g/m<sup>2</sup> (colour)
- XS > 4XL
- 1 pc/pack & 10 pcs/carton



**DUO CONCEPT**  
with B&C Heritage LSL /men

### SIZES [CM]

| B&C HERITAGE LSL /W. SW P43 | US    | XS | S   | M   | L   | XL  | 2XL | 3XL | 4XL | 5XL | 6XL |
|-----------------------------|-------|----|-----|-----|-----|-----|-----|-----|-----|-----|-----|
| A DRESS SIZE                | IT 34 | 36 | 40  | 42  | 44  | 46  | 48  | 50  | -   | -   | -   |
|                             | EU 34 | 36 | 38  | 40  | 42  | 44  | 46  | 48  | -   | -   | -   |
|                             | UK 8  | 10 | 12  | 14  | 16  | 18  | 20  | 22  | -   | -   | -   |
| B CHEST SIZE                | CM 91 | 96 | 101 | 106 | 111 | 116 | 121 | 126 | -   | -   | -   |
| C CENTER BACK LENGTH        | CM 65 | 66 | 67  | 68  | 69  | 70  | 71  | 72  | -   | -   | -   |



## PURE COTTON WOMEN'S LONG SLEEVED EASY CARE

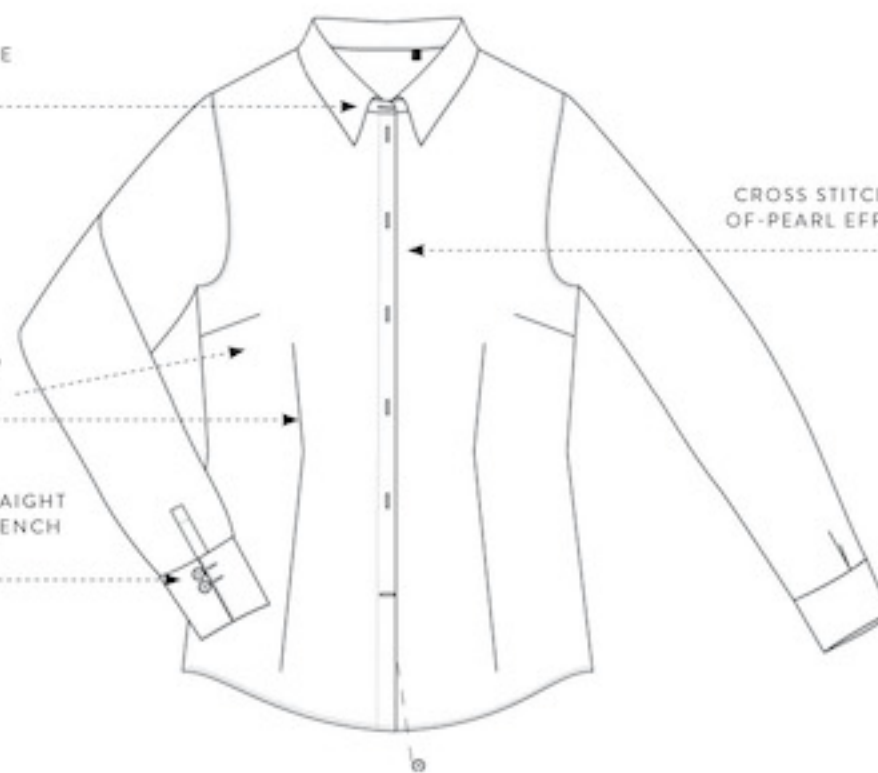
### COMFORTABLE POPLIN SHIRT EASY CARE

SOFT FEMININE COLLAR

CROSS STITCHED MOTHER-OF-PEARL EFFECT BUTTONS

DARTS AT BUSTLINE AND FRONT PANEL

2-BUTTON STRAIGHT CUFF WITH FRENCH CUFF OPTION



DARTS AT BACK PANEL

CURVED BOTTOM HEM

