

# HS172

## RECYCLED SPORTS-T MOVE

Sports T-shirt for men



100% ACTIVE-DRY<sup>®</sup> polyester (50% recycled)

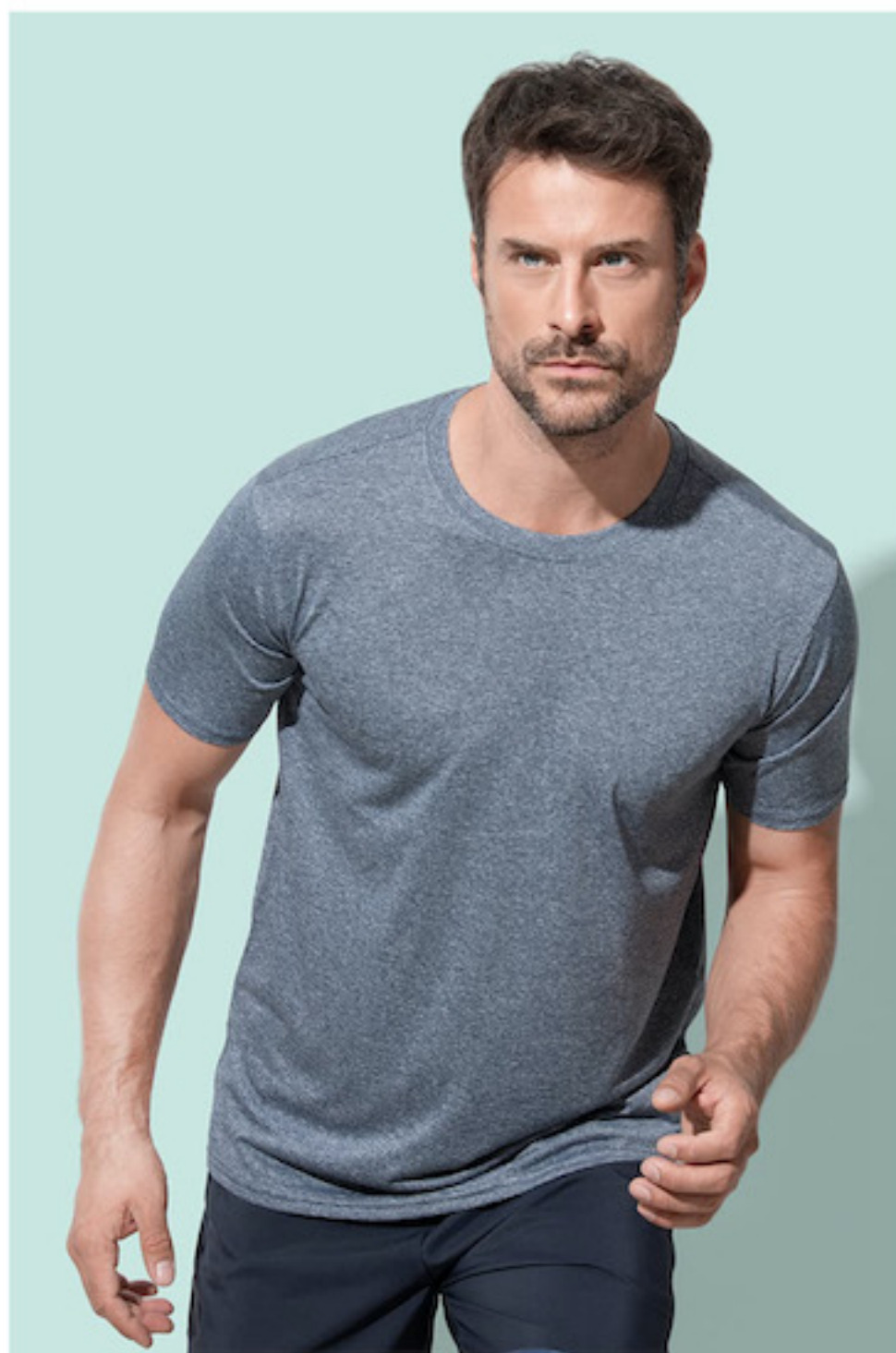
S-2XL | 125 g/m<sup>2</sup> | Normal Fit | 24 / carton



### Special features



eco-friendly functional fabric, made from recycled plastic bottles (4 per T-shirt), ACTIVE-DRY<sup>®</sup>: quick-drying, moisture-wicking and breathable material, heathered look, self-fabric collar, neck tape, side seams, premium woven size label in the collar, tear-away care label in the side seam, washable at 40°C



Grey Heather  
GYH



Denim Heather  
DMH

| Size        | S  | M  | L  | XL | 2XL |
|-------------|----|----|----|----|-----|
| Length (cm) | 70 | 72 | 74 | 76 | 78  |
| Width (cm)  | 50 | 53 | 56 | 59 | 62  |

The stated sizes above are subject to standard tolerances.

### Counterparts:



ST8930 Recycled Sports-T Move

Stedman<sup>®</sup> - the brand you can trust



amfori Trade with purpose

Member of amfori, the leading global business association for open and sustainable trade. We participate in amfori BSCI. For more information visit [www.amfori.org](http://www.amfori.org)